

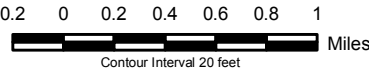
Readfield, Maine

OUTDOOR RECREATION & CONSERVATION AREAS

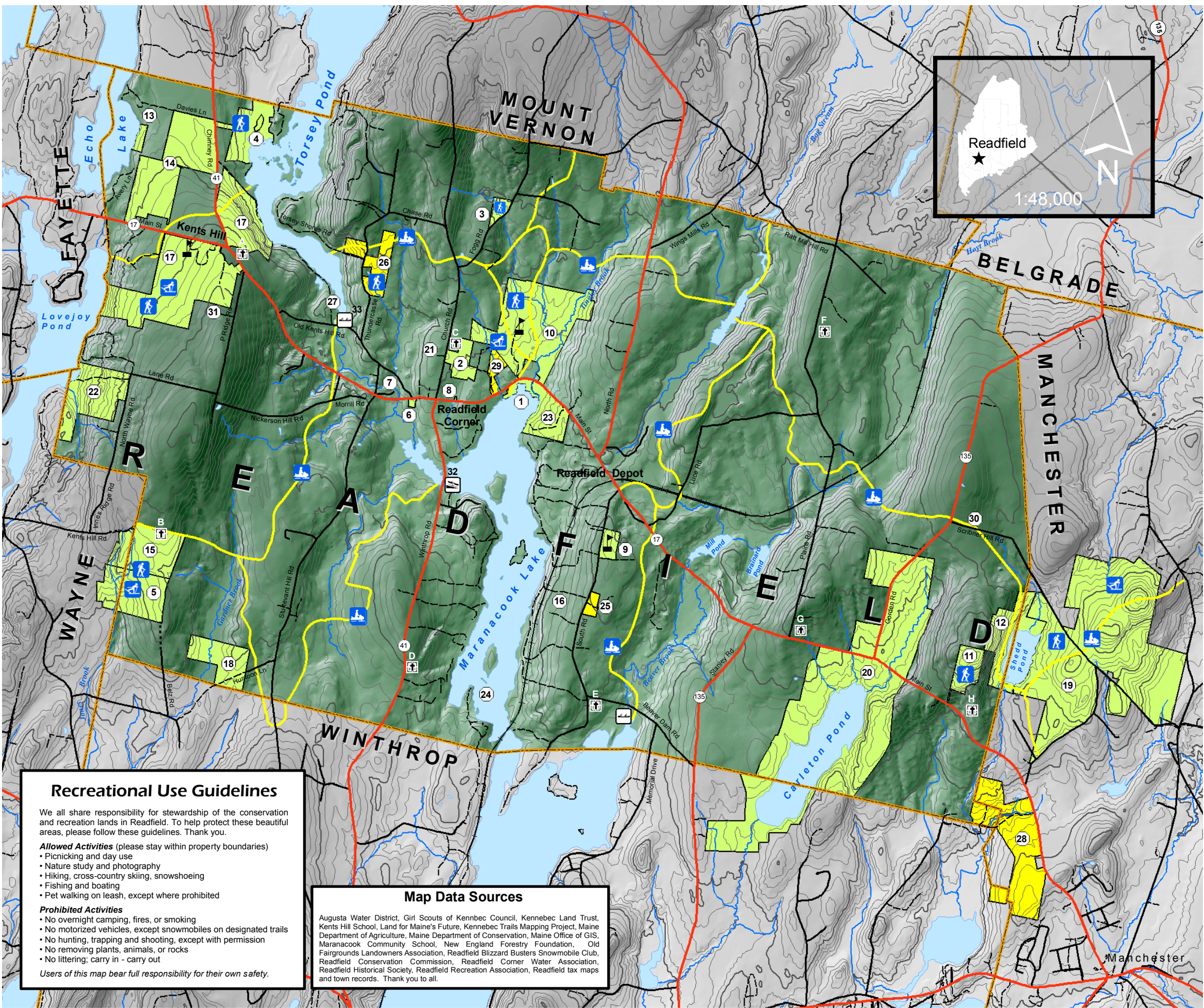
- Cemeteries
- Skiing Areas
- Hiking Areas
- Water Access
- Snowmobile Trails
- Conservation & Recreation Areas
- Easements

- AWD = Augusta Water District
- CSD = Consolidated School District 10
- GSKC = Girl Scouts of Kennebec Council
- KLT = Kennebec Land Trust
- MDOA = Maine Dept of Agriculture
- MDOC = Maine Dept of Conservation
- NEFF = New England Forestry Foundation
- TOR = Town of Readfield

Parcel boundaries approximate.



Fourth Edition, June 2010.
Research and text for all editions by Jym St. Pierre.
First edition cartography by Bart DeWolf, second edition cartography by Jeff Fredenburg.
Third and fourth edition cartography by Art Grindle, Kennebec Soil and Water Conservation District.
Funding for map production provided by Readfield Conservation Commission and Kennebec Land Trust.
© 2010 Readfield Conservation Commission, 8 Old Kents Hill Road, Readfield, ME 04355.



Recreational Use Guidelines

We all share responsibility for stewardship of the conservation and recreation lands in Readfield. To help protect these beautiful areas, please follow these guidelines. Thank you.

Allowed Activities (please stay within property boundaries)

- Picnicking and day use
- Nature study and photography
- Hiking, cross-country skiing, snowshoeing
- Fishing and boating
- Pet walking on leash, except where prohibited

Prohibited Activities

- No overnight camping, fires, or smoking
- No motorized vehicles, except snowmobiles on designated trails
- No hunting, trapping and shooting, except with permission
- No removing plants, animals, or rocks
- No littering; carry in - carry out

Users of this map bear full responsibility for their own safety.

Map Data Sources

Augusta Water District, Girl Scouts of Kennebec Council, Kennebec Land Trust, Kents Hill School, Land for Maine's Future, Kennebec Trails Mapping Project, Maine Department of Agriculture, Maine Department of Conservation, Maine Office of GIS, Maranacook Community School, New England Forestry Foundation, Old Fairgrounds Landowners Association, Readfield Blizzard Busters Snowmobile Club, Readfield Conservation Commission, Readfield Corner Water Association, Readfield Historical Society, Readfield Recreation Association, Readfield tax maps and town records. Thank you to all.

Recreation & Conservation Areas

1. Readfield Beach (TOR)
2. Readfield Fairgrounds (TOR)
3. Fogg Farm Conservation Area (TOR, KLT)
4. Torsey Pond Nature Preserve (TOR, KLT)
5. Readfield Town Farm & Forest (TOR)
6. Readfield Recreation Lot (TOR)
7. Factory Square Dam Site (TOR)
8. Parks Lot (TOR)
9. Readfield Elementary School (TOR)
10. Maranacook Community School (CSD)
11. Wyman Memorial Forest (KLT)
12. Gannett Woods (KLT)
13. Avery-Smith Shore Land (KLT)
14. Echo Lake Watershed Preserve (KLT)
15. Macdonald Conservation Area (KLT)
16. Westman Woods Preserve (KLT)
17. Kents Hill School
18. Luce Memorial Forest (NEFF)
19. Allen-Whitney Memorial Forest (NEFF)
20. Carleton Pond (AWD)
21. Readfield Corner Water Association
22. Camp Kirkwood (GSKC)
23. Camp KV
24. Blueberry Island

Easements

25. St. Andre Fields (KLT)
26. Tyler Conservation Area (KLT)
27. Torsey Pond Outlet Conservation Area (KLT)
28. Lakeside Orchards (MDOA)
29. Old Fairgrounds Field
30. Scribner Hill Easement (TOR)
31. P-Ridge Easement (TOR)

Water Access

32. Maranacook Lake (MDOC)
33. Torsey Pond (MDOC)

Cemeteries

- A. Kents Hill Cemetery (TOR)
- B. Huntton Cemetery (TOR)
- C. Readfield Corner Cemetery (TOR)
- D. Armstrong Cemetery (PRIVATE)
- E. Whittier Cemetery (TOR)
- F. Dudley Plains Cemetery (TOR)
- G. East Readfield Cemetery (TOR)
- H. Case Cemetery (TOR)