



May 8, 2018

Town of Readfield
8 Old Kents Hill Road
Readfield, Maine 04355

RE: Response to RFP – Readfield Trail Infrastructure Project

Submitted by: Andrew Norkin, Director of Trails and Recreation Management

Appalachian Mountain Club (AMC)

Summary of qualifications

The AMC professional trail crew has over 98 years of proven experience in performing trail construction and maintenance in the Appalachian region of the United States. We have performed work for numerous federal and state agencies, local land trusts, other non-profit organizations and for private land owners. The AMC maintains over 1800 miles of trails throughout the Northeastern United States including 350 miles of the famed Appalachian National Scenic Trail (AT). We employ 9 full-time trails staff and hire up to 100 seasonal employees each year to construct and maintain trails.

In addition to our management and maintenance responsibilities, each year we contract with state and federal agencies and other non-profits to perform trail assessments, construct new trails, repair and maintain existing trail networks and provide or assist with recreational management plans. In 2018 we have a crew of 11 dedicated to working constructing and maintaining trails for “outside” organizations.

Our AMC professional crews are trained yearly in the proper use of hand and power tools that are used in trail construction / reconstruction work. Our chainsaw operators come with a federal and state recognized certification. The techniques that we use are often recognized by other agencies and trail partners as being state of the art and “tried and proven”. Trail crews are also provided with a 3 day – training in “Safe Rigging Practices for Trail Work” each year. Crew members all are required to have a minimum Wilderness First Aid certification.

AMC has also applied its extensive trail experience in writing and publishing the 4th edition of the Complete guide to trail Building and Maintenance which is often

AMC Headquarters: 10 City Square • Boston, MA 02129-3740 • 617-523-0636 • outdoors.org

Training & Equipment Center: 6 Spice Street • Boston, MA 02129-3740

Regional Headquarters: Pinkham Notch Visitor Center • 361 Route 16 • Gorham, NH 03581-0298 • 603 466-2721

Additional Offices: Amherst, MA • Bethlehem, PA • Bretton Woods, NH • Greenville, ME • New York, NY • Portland, ME



regarded as the “go to” guide for those seeking detailed information on how to design and build non-motorized use.

Recent trail projects completed by the AMC’s professional trail crew include:

1. 2017 Phase VI of the Great Circle Trail, Namakanta Unit, Maine Bureau of Parks and Lands
2. 2017 Lost Pond trail (AT), 197’ elevated boardwalk and 36’ pedestrian bridge, White Mountain National Forest
3. 2016 – Mt. Pismire trail, Raymond Maine – design and construction, Loon Echo Land Trust
4. 2016 – Oyster River ADA trail and pedestrian bridge, Town of Durham, NH
5. 2016 – Glassface Mountain trail, Rumford, Maine – design and construction- Mahoosuc Land Trust
6. 2016 – Installed 120 Bog Bridges on the Mahoosuc Trail (AT) – Goose Eye Mtn, Fulling Mill Mountain, Appalachian Trail Conservancy/ Maine Bureau of Parks and Lands
7. 2015 – 40’x 5’ Gluelam stringer bridge – 19 Mile Brook trail, White Mountain National Forest
8. 2015 – ADA compliant trail and pedestrian bridge , Notte-Mehan Park, North Providence, RI
9. 2014 – 97’ pedestrian bridge on Firewarden’s trail, Bigelow Preserve, Maine Bureau of Parks and Lands

Work performance

For the Readfield Trail Infrastructure project the AMC does not plan on hiring any subcontractors to do the work. Work will be performed using mostly hand tools, cable highlines, chainsaws, an ATV and trailer and truck to dispose of project materials.

Attached are photos showing some of our recent pedestrian bridge and bog bridge projects.

AMC Headquarters: 10 City Square • Boston, MA 02129-3740 • 617-523-0636 • outdoors.org

Training & Equipment Center: 6 Spice Street • Boston, MA 02129-3740

Regional Headquarters: Pinkham Notch Visitor Center • 361 Route 16 • Gorham, NH 03581-0298 • 603 466-2721

Additional Offices: Amherst, MA • Bethlehem, PA • Bretton Woods, NH • Greenville, ME • New York, NY • Portland, ME



**APPALACHIAN
MOUNTAIN CLUB**
YOUR CONNECTION TO THE OUTDOORS

Cost Breakout

Cost breakout includes:

- Removing existing bog bridging, footbridges, and viewing platform
- Build three footbridges
- Replace existing 6'x9' viewing platform
- Replace 425' of bog bridging

(costs include changes/variances to project agreed upon via Jerry Bley's email dated May 1, 2018)

Labor – includes crew time and project supervision = \$18,200.

Equipment – includes pick-up truck, ATV, trailer, large stake-bed truck to transport lumber/bog bridges = \$2000.

Materials – includes 3"x8" cedar/tamarack bog bridge planks, all weather wood, fasteners, diamond piers and other materials to construct structures listed above = \$8752.

Total Labor, Equipment and Materials = \$28,952

*Price per additional 2 stringer 3"x8"x8' bog bridge (materials and labor) = \$110.

*Price to haul materials out of woods and trucking to the town transfer station = \$850

AMC Headquarters: 10 City Square • Boston, MA 02129-3740 • 617-523-0635 • outdoors.org

Training & Equipment Center: 6 Spice Street • Boston, MA 02129-3740

Regional Headquarters: Pinkham Notch Visitor Center • 361 Route 16 • Gorham, NH 03581-0298 • 603 466-2721

Additional Offices: Amherst, MA • Bethlehem, PA • Bretton Woods, NH • Greenville, ME • New York, NY • Portland, ME

PROPOSAL FORM

Readfield Trail Infrastructure Project:

Project Base Price

Lump sum price to complete the project as specified. \$28,952 \$

twenty eight thousand nine hundred fifty two dollars

Project Alternates

Proposers are welcome to recommend project alternates that may increase or decrease the project scope and/or cost. Use additional pages as necessary.

Alternate #1

Additional 2 stringer bog bridge
\$ 110. each

Alternate #2

Haul materials out of woods & to transfer station
\$ 850. lump sum

Alternate #3

\$ _____

Material Estimates

Each proposer is responsible for performing their own material calculations.

Material estimate provided on separate sheet.

Name of Proposer (Company):

Appalachian Mountain Club

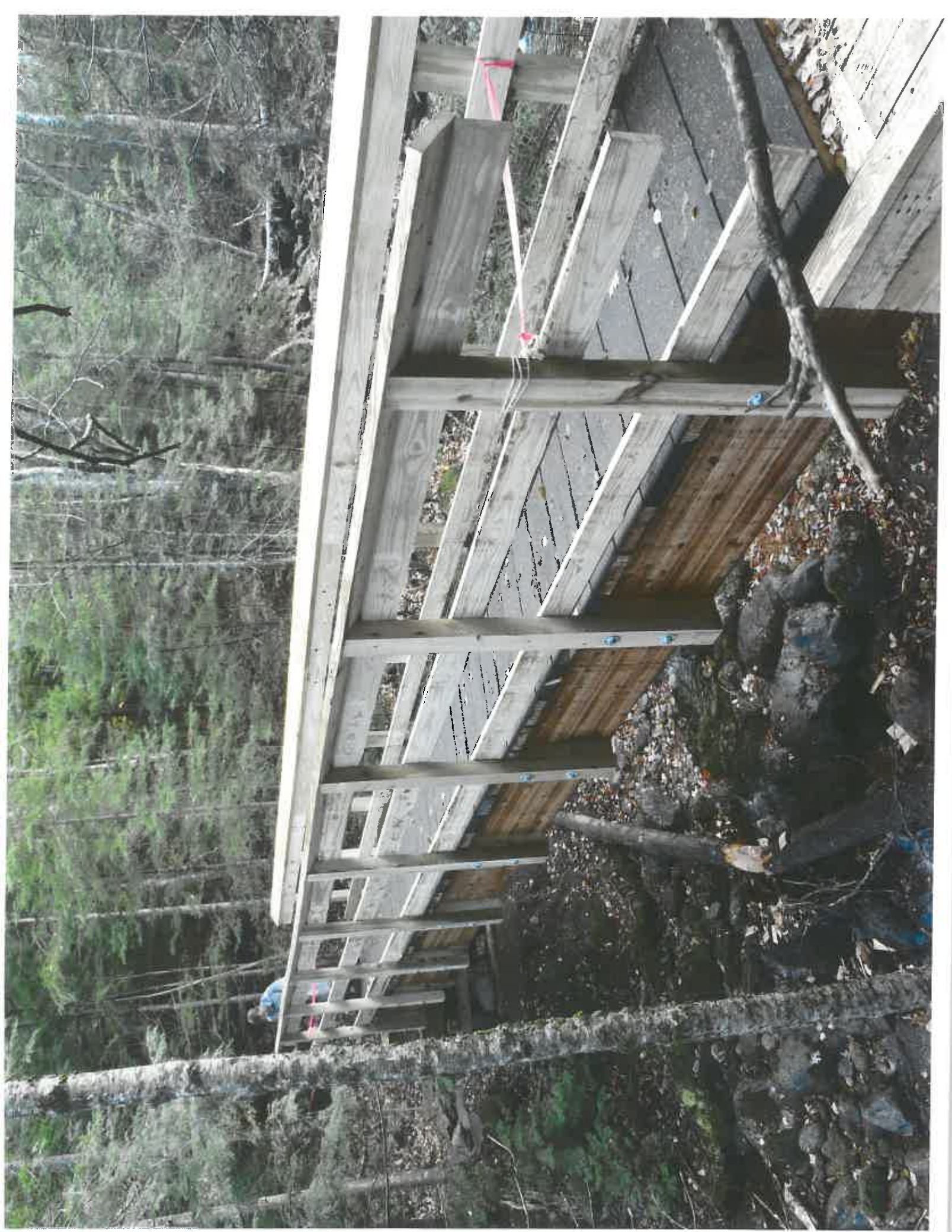
Name of Proposer (Authorized Representative):

Andrew Norkin

5 Readfield Trail Infrastructure Project

Andrew Norkin
Director of Trails





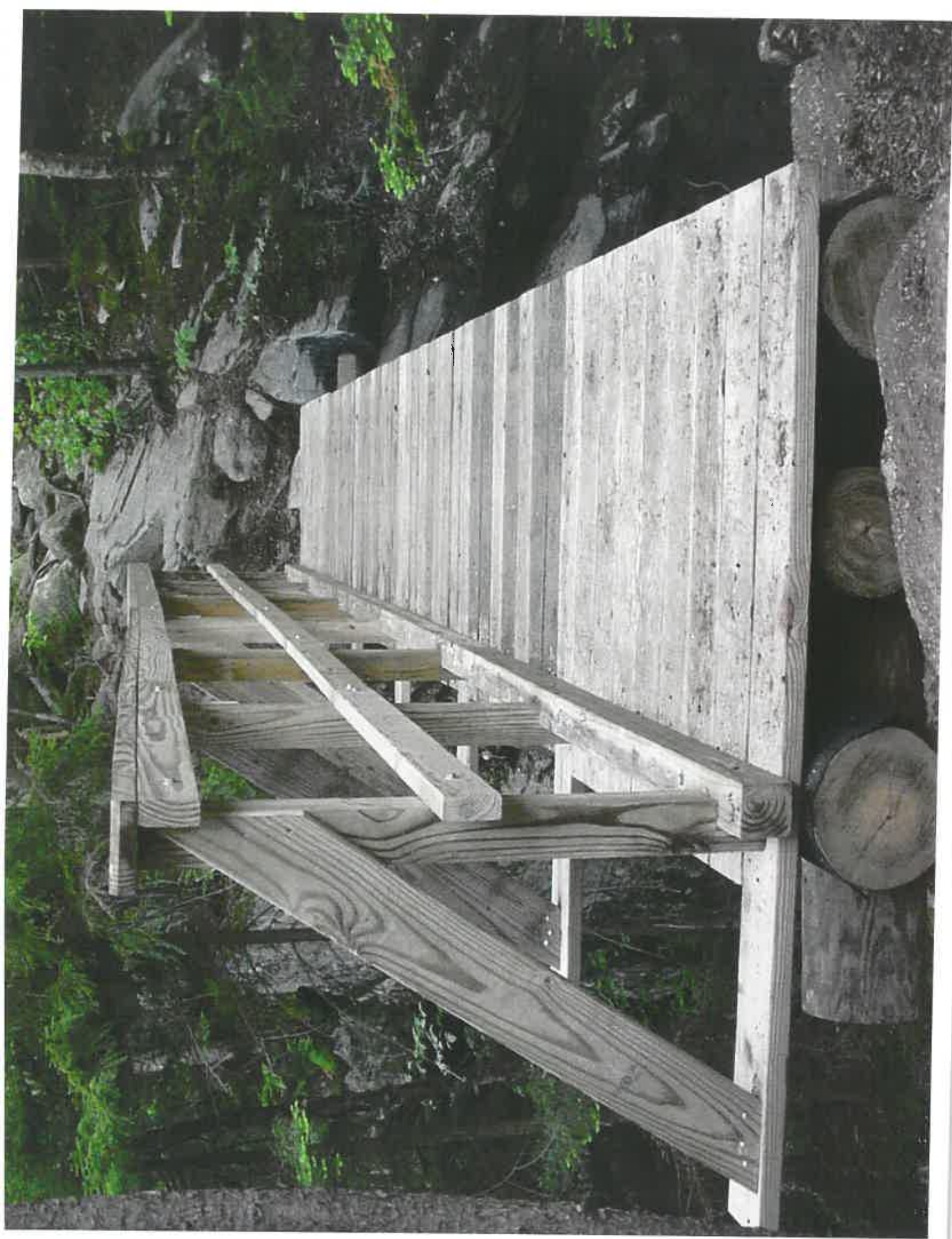














Caribou Recreation Development, LLC

15 Summer Street, Kennebunk, Maine 04043 ♦ mikecoope@gmail.com ♦ 207.357.7587

May 8, 2018

Proposal for Readfield Trail Infrastructure Project: Fogg Farm Conservation Area and Torsey Pond Nature Preserve, Readfield, Maine

Company Summary

Caribou Recreation Development, LLC (CRD) incorporated in 2002 in Bethel, Maine. For the past seventeen years, CRD has provided services for operating and managing Nordic ski centers; as well as trail design, trail layout, trail assessments, and trail construction. CRD has extensive experience in backcountry, front country, and multi-use trails.

Caribou Recreation Development's owner, Michael Cooper has over thirty years of experience in trail design and trail construction. Michael as principal in the company and hires a number of employees to meet seasonal needs. Recently Caribou has hired two full-time and five part-time during the winter months, and two full-time and one part-time in the summer, and fall months. CRD has the capability to hire additional employees based on job requirements. Michael has reviewed the work sites on the two trails. He is familiar with completing work on and near wetlands, he is a Contractor Certified in Erosion and Sediment Control through Maine DEP and has worked on several numerous projects in sensitive areas. He and his staff understand the project goals, the sub-committees interests in maintain access here, as well as the nature of the properties. Our intent will be to meet the board and committees' vision, and maintain the design goals throughout the construction process. We keep a solid working relationship with our clients and we will remain actively engaged in the process to create an appealing and remarkable trail for the community.

Description of work

The goals for Caribou Recreation Development on the Otter Pond Mountain trails are to limit the impact of recreation and allow use for a wide range of user skills and abilities. We will use the Forest Service Outdoor Recreation Accessibility Guidelines (FSORAG) 2013 to describe minimum requirements as we construct trails..

- Caribou will cut and remove brush and deadfall from the flagged corridor to the width of five feet and a height of eight feet. CRD will clear to support a stable three-foot wide trail surface. Leveling, grading and compaction of this bed will occur only as needed to ease travel for construction crews.
- Little or no tread way definition is expected, and no water bars, grade dips, steps, check dams, or bridging will be constructed. Any trail bed alterations will have slopes under 12% .
- Caribou is certified in erosion control practices by the Maine DEP (#2114 12/31/2019) and is capable of excavating in and around shore land zones. CRD will use best management practices for erosion and sedimentation control as outlined in the Maine Trails Manual and DEP's Voluntary Contractor Certification.
- CRD or volunteers will paint 2"x 6" rectangular blazes on trees so that a paint blaze can be seen at all times. MWWC will provide two pints of school bus yellow exterior enamel acrylic paint for the blazes.
- CRD will add brush to decommission and obscure any side trails used in the construction process and encourage use of the main trail.

- Maine Wilderness Waterway Trust will provide volunteers to remove brush and cut logs from the corridor as well as remove small limbs and herbaceous plants with loppers and hand saws. Use of chainsaws and cross cut saws is limited to CRD staff while the volunteers work with CRD as its liability insurance does not cover saw use by non-certified sawyers.
- CRD will and expects volunteers to distribute brush and slash widely and at least fifty feet from the trail corridor. CRD will remove larger blowdowns, snags, and trees within the corridor.

Worksite Management

CRD has a work-site-safety plan in place that ensures the safety of its employees and trail users. We may ask members of the Town of Readfield to aid us in meeting our goals by adhering to standard operating policies and procedures we use ourselves, when visiting or volunteering.

Temporary signs will be placed at the trailheads explaining the work underway. Additionally, at each work site, a sign explaining the work and our expectations for passing through a work zone will be placed. Bridges under construction will be fenced to restrict foot traffic. If necessary, when machines, rocks or materials move over the ground, the public may be asked to wait briefly until the area is safe for travel. In general, CRD employees using motorized machines or tools will turn off machines and come to a complete stop when visitor approach. A clean and orderly work site will be maintained at all times. Tools will be removed from the work site at the end of each day, and the area under construction will be left in an orderly and stable state. CRD staff will interact with the public during the construction phase, providing information on the goals of the project and the Readfield Trail Infrastructure Project when appropriate, but

Proposed Timeline, Work Schedules and Payment Schedules

Caribou Recreation Development intends to complete work on the Fogg Farm Conservation Area's bridge, and the first bridge on the Torsey Pond Nature Preserve trail before the end of June. We expect to purchase and stage materials to reconstruct the puncheons, observation platform and the second Torsey Pond bridge as soon as the first Torsey bridge is complete. Construction in and near the shoreline zones is planned for dryer periods in mid-July and August. We intend to start after, the worst of the black fly season, and expect the first projects to extend about three weeks. We will work solely on this project once starting construction up to five days per week and

Caribou Recreation typically seeks to receive payments for work and materials in three disbursements: one third as a deposit prior to construction, one-third mid-way through the project and one third after the construction is completed.

We enjoy maintaining running conversations with the organizations we work with, and we will expect members of the Town of Readfield to review work, and discuss specific ideas, or concerns. We typically seek to have one organization representative to complete all formal communications. Ideally, this person is capable of defining completion of contractual expectations and express any concerns the Town may have with the construction processes.

Costs

Outlined below are brief descriptions for specific construction materials and the total cost for the job. CRD will honor the price below for a period of one hundred and eighty days from the date submitted.

Construction Outline

Fogg Farm Conservation Area

CRD will construct a 26' long bridge that is 3' wide bridge using 3- 2"x12" joists spaced 18' on center with pressure treated lumber. 2"x6" pressure treated deck boards will be screwed to the

joist using 3 1/8" GRK screws driven flush. Abutments made from a box of 6"x6" pressure treated timbers lag bolted together and filled with soil will also act as stairs the bridge surface. #5 rebar driven through the timbers and 2' into the earth will secure the boxes remain aligned and stable. A railing made from 4"x4" post and 2"x6" pressure lumber spaced no more than 4" apart will be constructed on both side of the bridge.

Torsey Pond Nature Preserve Bridge II

CRD will construct a 18' long bridge that is 3' wide bridge using 2- 2"x10" joists spaced 18' on center with pressure treated lumber. 2"x6" pressure treated deck boards will be screwed to the joist using 3 1/8" low head GRK screws. Abutments made from a box of 6"x6" pressure treated timbers bolted together and filled with soil will act as stairs the bridge surface. #5 rebar driven through the timbers and 2' into the earth will secure the box remains aligned and stable. A railing made from 4"x4" post and 2"x6" lumber spaced no more than 4" apart will be constructed on both side of the bridge.

Puncheons

CRD will replace 425' of puncheons in compliance with the Wetland Trail Design and Construction by the US Forest Service. CRD will use 3- 4"x 6"x8" pressure treated lumber spaced to complete an 18 inch tread width. Deck boards will be secured to the sleepers with 6" low head GRK screws. The puncheons will be placed level and no more than 2% slope. Sleepers will not be more than 6 feet apart. Existing boards will be remove and disposed as the Town wishes

Viewing Platform

CRD will replace the Viewing Platform at Torsey Nature Preserve with a new structure of the same size. All materials, except the roofing, which is 2nd clear cedar shingles, and the 1"x6" rough shiplap pine, will be pressure treated wood. Diamond Pier or similar pier from another manufacturer is planned as a foundation. A frame of 4"x4" posts capped with 4"x6" headers hold up 4"x6" rafters. The rafters are screwed to the headers with 8" timberloc screws and a skin of 5/8" PT plywood ties the roof together.

Construction Costs

Labor Cost: \$26,225.00

Material Costs: \$9,550.00

Machines Cost: \$500.00

Kubota RTV utility ATV

Removal of exsting structures to transfer station (included above): \$6200.00*

**CRD assumes the Town of Readfield will cover the tipping fees at the transfer station*

Total Cost \$36,275.00

Warranty of Work

CRD warrants that its construction will remain stable and identifiable for a period of two years, with the exception of vandalism, damage from severe storms such as tornadoes or microbursts, and flood damage caused by re-routing a number of minor streams to trail surfaces. CRD will continue to monitor the success of these bridges, puncheons, and platform for a period of three years after construction.

Insurance

Caribou Recreation Development is remains up-to-date with its liability, worker's compensation, and vehicle insurances. Proof of policies available on request.

References

Lee Dassler, Western Foothills Land Trust, 207-739-2124

Andy Bartleet, Hurricane Hisland Outward Bound School, 207-706-6290

Kirk Siegel, Mahoosuc Land Trust, 207-890-8670

Caribou Recreation Development Projects:

- **Mahoosuc Land Trust : 2017**
 - Layout, plan and construct a new one and a quarter mile universally accessible trail on their machine build multi-use trail that circles their Valentine Farm Bethel, Maine
- **Western Foothills Land Trust: 2015-2016**

Layout, plan and construct a new three mile machine build multi-use trail that circles their Witt Swamp Preserve in Norway Maine
- **Maine Wilderness Watershed Trust: 2016-2017**

Establish a recreation management plan to include developing new trails, and campsites on a 10,000 acre property in Pierce Pond Maine.
- **Bureau of Parks and Land, 2016**

Construct 2 shelters, a campsite, and two miles of new backcountry trail on a 40,000 acre property on its Namakanta Unit.
- **Mahoosuc Land Trust, 2015**

Construct a parking area, erosion control gardens and timber steps to allow hand carry boat access area to the Androscoggin River in Rumford Center,
- **Western Foothills Land Trust, 2011-2014**

Design, layout, and construct a three-mile multi-use trail on a 1,200 acre property in Buckfield, Maine
- **Town of Bethel, 2014-2015**

Provide trail assessment and trail log for the Mount Will Trail. Establish relocations around steep and eroding pitches. Design a three-mile hiking trail on the Town's "Bingham" property.
- **Mahoosuc Land Trust, 2010-2012**

Asses existing trails, provide alternative routes and construct significant trail relocations on Rumford Whitecap. Design trail to Black Mountain in Rumford, Maine
- **Western Foothills Land Trust, 2009-2015**

Design, layout, and develop plans for a 12-kilometer multi-use trail system outside downtown Norway, Maine.
- **Appalachian Mountain Club 2004-2011**

Design, and build 120-mile multi-use trail system in Bowdoin College Grant, on a 37,000 acres
- **Grafton Loop Trail Coalition 2000-2005**

Design, layout, and supervise the construction of a 37-mile backcountry hiking trail in Newry, Maine



FRAZIER CONSTRUCTION

Tom Frazier
(207) 491-5828

29 Tradition Way Livermore Falls Me. 04254
frazierconstruction@roadrunner.com

May 8, 2018

Town of Readfield 8 Old Kent's Hill Rd. Readfield Me. 04355	Readfield trail infrastructure project
---	--

These are the total costs of materials and labor that would be put into the trail work specified in the RFP and the changes on the follow up email from Jerry Bley. All of the cedar materials would be supplied by Dueys Lumber in Liberty Me. ACQ pressure treated materials to be supplied from Ware N Butler supply in Livermore Falls Me. The DP 75/63 diamond piers will be supplied from one of the southern branches of Hammond Lumber and delivered on site. Archies would be supplying and hauling away the trash container with all the demo debris. All of the work would be done with a couple of four wheelers with trailers. A separate trailer will house a tool box that would consist of a generator, chain saw and all of the hand and power tools needed for the job.

Trash container and dump fees. \$1,250.00

Removal of all the debris. \$6,720.00

Total cost of all the materials for the projects. \$12,237.50

Equipment costs. \$2,500.00

Labor. \$17,640.00

Total cost of project \$40,347.50

Payment conditions upon agreement will be \$ at the start of project, and or material delivery, \$

And remainder upon completion \$

SPECIFICATIONS
Readfield Trail Infrastructure Project

- 1) Permitting – All local and State permits are the responsibility of the Town of Readfield.
- 2) Notifications, Regulations, and Requirements – The proposer shall also be required to meet all laws, rules and regulations of the State of Maine during the course of this project.
- 3) Erosion Control – Erosion control shall be the responsibility of the proposer, and shall be installed in compliance with the existing MEDEP best practices.
- 4) Bridges (US Forest Service Trail Bridge plans should be referenced)
 - a) Fogg Farm Conservation area
 - i) Existing bridge removed and disposed of properly
 - ii) 26' length
 - iii) 36" tread width
 - iv) Railings on both side
 - v) Pressure treated sub deck with pressure treated or rough sawn cedar decking
 - vi) Abutments need to be built to ensure proper bridge anchor and alignments
 - b) Torsey Pond Nature Preserve Bridge I
 - i) Existing bridge removed and disposed of properly
 - ii) 18' length
 - iii) 60" tread width
 - iv) Railing on both sides
 - v) Pressure treated sub deck with pressure treated or rough sawn cedar decking
 - vi) Abutments need to be built to ensure proper bridge anchor and alignments
 - c) Torsey Pond Nature Preserve Bridge II
 - i) Existing bridge removed and disposed of properly
 - ii) 18' Length
 - iii) 36" tread width
 - iv) Railings on both side
 - v) Pressure treated sub deck with pressure treated or rough sawn cedar decking
 - vi) Abutments need to be built to ensure proper bridge anchor and alignments
- 5) Bog Bridging (Please reference Wetland Trail Design and Construction by the US Forest Service, 2007)
 - a) 425' of raised bog bridges need to be replaced.
 - i) Pressure treated or rough sawn cedar for all parts of bog bridges
 - ii) 18 inch tread width
 - iii) Bridging should be level to reduce slipping
 - iv) Sleepers should not be more than 6 feet apart
 - v) Planks should be made of 2 inch or thicker wood
 - vi) Existing bog bridging should be remove and disposed of properly
- 6) Viewing Platform at Torsey Nature Preserve
 - a) 6' x 9' roofed viewing platform
 - b) Diamond Pier is encouraged to be used
 - c) Built with Pressure treated lumber

PROPOSAL FORM

Readfield Trail Infrastructure Project:

Project Base Price

Lump sum price to complete the project as specified. 40,347.50 \$

Project Alternates

Proposers are welcome to recommend project alternates that may increase or decrease the project scope and/or cost. Use additional pages as necessary.

Alternate #1

\$ _____

Alternate #2

\$ _____

Alternate #3

\$ _____

Material Estimates

Each proposer is responsible for performing their own material calculations.

Name of Proposer (Company):

Frazier Construction

Name of Proposer (Authorized Representative):

Tom Frazier

Signature of Authorized Representative:

Date: 5/8/18

SERVICES
AGREEMENT

Readfield Trail Infrastructure Project:

THIS AGREEMENT is made this _____ day of _____, 2018 by and between the Town of Readfield, a municipal corporation existing under the laws of the State of Maine and located in the County of Kennebec, State of Maine (hereinafter "OWNER") and _____ (hereinafter "CONTRACTOR").

The CONTRACTOR shall perform work on the Trails, as needed and directed by the Town Manager or his/her designee. All equipment and materials involved with the completion of the specified work shall meet current US Forest Service specifications and DEP standard best practices.

The CONTRACTOR shall furnish all of the services, materials and perform all of the work as described in the Specifications and Proposal Form, and shall do so in accordance with the CONTRACTOR's Proposal Form dated _____, 2018.

The CONTRACTOR agrees to abide by the OWNER's prohibitions against workplace violence, sexual harassment, and political activities in Readfield while working in Readfield.

The CONTRACTOR must maintain liability insurance, in the amount of \$400,000 per occurrence, for personal injury, death and property damage claims which may arise from operations under this agreement. The CONTRACTOR shall provide evidence of insurance or financial resources sufficient to satisfy the requirements of the Workers' Compensation Act.

The CONTRACTOR shall provide to the OWNER a Certificate of Insurance naming the OWNER as an additional insured prior to the start of any work under this agreement. The OWNER disclaims any and all responsibility for injury or damages to the CONTRACTOR, its agents, or others at any time during this agreement.

The CONTRACTOR shall provide the OWNER with a current and complete W-9 form prior to the start of any work under this agreement.

The CONTRACTOR, to the fullest extent permitted by law, shall indemnify and hold harmless the OWNER, and their agents, employees and/or invitees against all claims, damages, losses and expenses, including, but not limited to, attorneys' fees arising out of or resulting from the performance of the work regardless of standard of care. This indemnification extends to all costs and all attorneys' fees incurred by the OWNER.

The CONTRACTOR guarantees that the work to be done under this contract and the materials to be furnished by the supplier for use in the construction of the same shall be free from defects or flaws. This warranty shall be for a period of one year from the date of completion.

All materials and work may be subject to inspection by the OWNER. The Town Manager or designee shall be allowed access to all parts of the work and shall also have the right to inspect and test, at the OWNER's expense, by any methods adequate to ensure an acceptable quality of work

It is strongly recommended that the CONTRACTOR, before submitting a bid, become completely familiar with the job site and the required work. The OWNER may be available to participate in

pre-bid inspections or site visits at designated times and locations, and occasionally by request. No consideration will be granted for any alleged misunderstanding of the material to be furnished, the work to be done, or for any defects in the final product that are the result of the absence of a formal pre-bid inspection.

The price(s) quoted in the Proposal Form shall include preparation, mobilization, installation, final cleanup, and all labor and materials required to complete the work as specified in the Specification and Proposal Form. The price shall be firm for the term of this AGREEMENT.

The OWNER reserves the right to submit Change Orders in writing to the CONTRACTOR. In that event, the OWNER shall negotiate with the CONTRACTOR to determine any new terms or costs. At the completion of work, each site shall be left in a neat and clean condition, subject to approval of the Town Manager or a Designee.

The OWNER shall remit to the CONTRACTOR full payment within two weeks of final project completion. The OWNER reserves the right to withhold payment should it be determined that the CONTRACTOR has not performed the services required as stated in the Road Work Specification.

Every effort shall be made to resolve conflicts between the OWNER and CONTRACTOR through direct negotiations between the parties. If resolution cannot be reached within a reasonable time frame then the matter shall be referred to third party arbitration by mutual agreement of the OWNER and CONTRACTOR.

The OWNER shall have the right to terminate this contract for cause with a minimum notice to the CONTRACTOR of Five (5) business days. Failure to comply with any requirement of this contract shall be cause for termination.

Witness

TOWN

By: _____
Eric Dyer,

Town Manager

Witness

CONTRACTOR

By: _____

Its: _____

ATTACHMENTS
Readfield Trail Infrastructure Project

DiamondPier®

FOUNDATION SYSTEM

RESIDENTIAL DIAMOND PIER LOAD CHART

IAS-Accredited Third-Party Bearing, Uplift, and Lateral Field Tests²

Minimum 1500 psf

Silts/Clays (CL, ML, MH, CH)³

Model No. / Pin Length	Bearing Load Capacity	□ Equivalent Base Area	○ Cylinder Comparison	⊗ Frost Zone	Uplift Load Capacity	Lateral Load Capacity
DP-50/36"	2700#	1.8 sf	18" dia	24"	600#	600#
DP-50/42"	* 3000#	2.0 sf	19" dia	36"	* 900#	* 600#
DP-50/50"	3300#	2.2 sf	20" dia	48"	1200#	600#
DP-75/50"	* 3750#	2.5 sf	21" dia	48"	* 1400#	* 600#
DP-75/63"	4200#	2.8 sf	22" dia	60"	1600#	600#

Equivalency to Traditional Concrete Footings

Minimum 2000 psf

Sands/Gravels (SW, SP, SM, SC, GM, GC)³

Model No. / Pin Length	Bearing Load Capacity	□ Equivalent Base Area	○ Cylinder Comparison	⊗ Frost Zone	Uplift Load Capacity	Lateral Load Capacity
DP-50/36"	3600#	1.8 sf	18" dia	24"	600#	600#
DP-50/42"	* 4000#	2.0 sf	19" dia	36"	* 900#	* 600#
DP-50/50"	4400#	2.2 sf	20" dia	48"	1200#	600#
DP-75/50"	* 5600#	2.8 sf	22" dia	48"	* 1400#	* 600#
DP-75/63"	6400#	3.2 sf	24" dia	60"	1600#	600#

Equivalency to Traditional Concrete Footings

*Interpolated from field test values.

Notes:

1. This load chart is intended for simple structures supported by columns, posts, and beams loaded up to, but not exceeding, the stated capacities. It is not intended for structures with asymmetrical, rotational, overturning, or dynamic forces. Intended uses are described in section 2.0 of ICC-ES prescriptive bearing evaluation report ESR-1895. For projects that exceed the capacities or limitations defined herein, or the intended uses described in ESR-1895, contact PFI for additional information or site-specific capacity evaluation. See also the [Use and Applications](#) download at www.diamondpiers.com.
2. Capacities shown are tested to a Factor of Safety of 2, and are applicable in properly drained, normal sound soils only, with minimum soil bearing capacities as indicated. Copies of the field test reports are available from PFI upon request.
3. See IRC Table R401.4.1, "Presumptive Load-Bearing Values of Foundation Materials," for a full description of applicable 1500 psf and 2000 psf soil types. For soils below 1500 psf, or soils with unknown characteristics, additional site and design analysis is required. For soils above 2000 psf, the values in this chart shall apply.
4. All capacities use four pins of the specified length per foundation. Pin length includes that portion of the pin embedded within the concrete head. See "Check Your Layout" in the Diamond Pier Installation Manual for more information on pin/pier layout and spacing restrictions.
5. For professional engineers designing for short-term transient loads, contact PFI for further information.

© 2018 Pin Foundations, Inc. All Rights Reserved. DOC0008/01.2018

4810 Pt Fosdick Dr NW, PMB 60
Gig Harbor, Washington 98335
www.pinfoundations.com

PIN FOUNDATIONS INC

Toll Free: 866-255-9478
Main Office: 253-858-8809
General Email: info@diamondpiers.com

Town of Readfield

**PROPOSAL FOR TRAIL IMPROVEMENTS AT TORSEY POND
NATURE PRESERVE AND FOGG FARM CONSERVATION AREA**

May 8, 2018



OBP Trailworks, LLC



"Promoting Sustainable Trails"

110 Poplar Hill Road, Turner, ME 04282

www.obptrailworks.com ♦ 207.312.1340 ♦ Jed@obptrailworks.com

Table of Contents

I. Cover Page.....	Page 1
II. Table of Contents.....	Page 2
III. Letter of Interest.....	Page 3
IV. Company Description.....	Page 4
V. Project Description.....	Page 6
a. Project Specifications.....	Page 6
b. Contractor Scope of Work	Page 7
c. List of Individuals Committed to the Project.....	Page 7
d. List of Equipment Available for the Project.....	Page 8
VI. Fee Proposal.....	Page 9
VII. Supporting Documents.....	Page 10
a. References.....43	Page 10
b. Examples of Bridges and Trail Projects.....	Page 11
c. Certificate of Insurance.....	Page 16



OBP Trailworks, LLC

Construction, Design and Educational Services for Sustainable Trails

8 May 2018

Town of Readfield
8 Old Kents Hill Road
Readfield, ME 04355

Dear Readfield Municipal Officers and Conservation Commission Members,

It is with considerable pleasure that OBP Trailworks, LLC (OBP) submits this proposal for trail improvements at Torsey Pond Nature Preserve and Fogg Farm Conservation Area. This project has special significance, as two of our full time staff members have deep-seated ties to Readfield. Tyler Keniston, who has worked for OBP for six years grew up less than a mile from the trailheads and Alice Webber who has also worked for OBP off and on for six years, spent each summer with her family at Skoglund Camp on Long Lake.

OBP Trailworks, LLC has the experience and expertise to complete this project in a naturalistic, sustainable, and safe manner. We pride ourselves in low impact construction techniques, a distinctly experienced crew, an eye for detail, and a commitment to provide the highest quality trail work at a reasonable cost. As the company owner and project supervisor, I have been building trails across the northeast for twenty years and maintain an everyday presence on OBP's projects.

This proposal is based on information contained in the Request for Proposals, the pre-bid meeting held on May 1, 2018 (attended by Alice Webber) and associated correspondence. Additional background information was gleaned from a site visit conducted on April 25, 2017 and through the process of bidding on the design work in November 2016.

We have made a sincere effort to complete this proposal in its entirety; however, if we have excluded anything, or if any clarifications are needed, please do not hesitate to contact us.

Please feel free to visit our website www.obptrailworks.com or Facebook page www.facebook.com/trailwork to see photos of recent work and learn more about our business.

Thank you for your consideration.

Sincerely,

Jedediah J. Talbot,
Owner, *OBP Trailworks, LLC*



Philosophy

OBP stands for “Off the Beaten Path” which has both literal and philosophical connotations. Our approach to trail design, building, and education is one that blends traditional construction techniques with evolving technological trends. By melding time honored stone and timber craft with environmentally sensitive equipment and methods, we promote safe and sustainable trails that are naturalistic and aesthetically pleasing while protecting the landscape and resources that we help provide access to.

Projects

Although trail planning and construction is a relatively niche business, OBP is proud of the breadth of our scope. We relish the opportunity to design and build all types of trails from high use community centered accessible paths to remote backcountry projects. Whether it is a flowing singletrack, gravel surfaced nordic ski trail or a remote stone staircase above tree line, we seek to create trails that enhance the recreational experience and direct connection with nature for our clients and trail users. Technical stone work, natural surface accessible trails, backcountry rigging systems, and materials transportation in logistically challenging areas are strengths of the company. Typical projects include pedestrian trail layout and design, new trail construction (hand built and machine built), intensive trail reconstruction (such as large rock staircases and technical retaining walls), trail infrastructure improvements (such as bridges, boardwalks, kiosks, benches, trailheads etc.), and trail skills instruction. During the winter months, OBP focuses on trail design projects and small scale low impact forestry operations.

Experience

OBP Trailworks, LLC typically has 4-7 full time workers from April through November. 2-3 workers stay employed year round. Every returning member of the OBP team has a minimum of five seasons of trail work experience. The practical knowledge of each person insures that each and every task will be approached with the skill of a practiced, professional hand.

Company owner Jed Talbot is a nationwide leader in low impact material transportation for difficult to access project sites. He is the co-author of the upcoming United States Forest Service Trail Manual titled “Principles of Backcountry Trail Rigging,” which will be the first published resource on how to safely move materials with hand powered equipment for backcountry construction projects. To date, Jed has facilitated nearly 100 workshops on trail building techniques and crew leading skills to volunteer, municipal, federal, private, public, and non-profit crews across the country.

Jedediah J. Talbot

Owner, OBP Trailworks, LLC



Summary of Experience

Jed has over two decades of experience with trail planning, maintenance, and construction as well as conservation based training services. OBP Trailworks, LLC designs, builds, and consults on all types of pedestrian and motorized trails. Company hallmarks include technical stone work, rustic timber joinery, naturalistic accessible trails and challenging backcountry rigging systems. Jed has facilitated over 100 workshops on trail building techniques and conservation skills to volunteer, municipal, federal, private, public, and non-profit crews across the country.

Education

Carleton College, BA 1998, *Cum Laude*

Professional Affiliations & Committees

Vice President and Board Member of the Professional Trail Builders Association (PTBA)
PTBA Finance Committee Member
Maine Trails Advisory Council Member
Chair of the Stewardship Committee for the Northern Forest Canoe Trail (NFCT)

Certifications

Maine DEP Erosion Control Specialist
Maine Certified Logging Professional
Federal Motor Carrier Certification

Work Experience

2004– Present

Owner, OBP Trailworks, LLC (formally Off the Beaten Path), a trail construction and design company in Turner, ME.

2005– 2009

Founding Partner, Peter S. Jensen and Associates, LLC, a trail contracting company specializing in accessible trails and boardwalks in West Stockbridge, MA.

1999– 2015

Conservation Work Skills Instructor (Lead Instructor 2004-15), Crew and Project Leader for SCA, a non-profit organization based in Charlestown, NH.

1988– Present

Assistant at Charles M. Talbot Associates, a family business dealing with colonial era antiques and restoration carpentry projects in Turner, ME.

Selected List of Relevant Projects

- ♦ Outdoor Learning and Education Center Trails, *Auburn, ME*. Design/build of a mile+ long accessible trail system for the Auburn-Lewiston YMCA. Phase I completed in 2017, Phase II to be completed in 2018.
- ♦ Hidden Lakes Trail Network, *Perito Moreno National Park, Argentina*. Contract to design and layout a 150 km hiking trail system and hire a team of US trail experts to train local and national crews while supervising construction.
- ♦ Langlais Sculpture Trails, *Cushing, ME*. Design/build of an accessible trail system at the Langlais Sculpture Preserve for the Georges River Land Trust.
- ♦ School to School Trail, *Guilford, ME*. Construction of an accessible trail between the Piscataquis Primary and Secondary Schools.
- ♦ Eleanor's Trail at Pleasant Hill Preserve, *Scarborough, ME*. Design/build of a 2040' long accessible path in partnership with Terrance J. Dewan and Associates, LLC.
- ♦ Big A Trail System, *York, ME*. Design/build of a mile long accessible trail system at Mt. Agamenticus, including a circular observation platform, picnic areas, overlooks, and spur trails.
- ♦ Hinkley Cove and Emmet Brook Trails, *Kokadjo, ME*. Construction of two 8-10' wide multi-use natural surface trails starting at Appalachian Mountain Club's Medawisla wilderness lodge.
- ♦ Quarry Mtn. Trail, *Alton, NH*. Design/build of a hiking trail for the Society of Protection of New Hampshire Forests.
- ♦ Donnabeth Lippman Park, *N. Windham, ME*. Design, layout, and construction of an accessible trail to Torsey Pond for the Windham Parks and Recreation Department.
- ♦ Mahana Cobble Trail, *Pittsfield, MA*. Design, layout and construction of a section of the Berkshire High Road, a community based long distance trail system for the Berkshire Natural Resources Council.
- ♦ Foss Mtn. Trail, *Eaton, NH*. Design, layout, and construction of a natural surface hiking trail for the Eaton Conservation Commission.
- ♦ Sandwich Notch Park, *Sandwich, NH*. Intensive stream bank restoration and park improvements including stone steps and a steel, cedar and locust bridge for the Town of Sandwich.
- ♦ Lily Bay, Baker and Number Four Mtns., *Greenville, ME*. Design and layout of hiking trails for the Maine Bureau of Parks and Lands.
- ♦ White Dot Trail, *Mt. Monadnock State Park, Jaffrey, NH*. Annual contract for stone staircase construction for the Society for Protection of New Hampshire Forests.
- ♦ Jones-Bonney Village Park, *Turner, ME*. Design and layout of an accessible trail system with picnic areas and a boat launch.
- ♦ Mad River Path, *Waterville Valley, NH*. Design/build of trail realignment and stream crossing for the town of Waterville Valley.
- ♦ Cider Hill Trail, *Old Orchard Beach, ME*. Construction of a natural surface multi-use trail in the Cider Hill Condominium Association.
- ♦ Irene's Way, *Waterville Valley, NH*. Design and construction of 1.3 miles of hand built backcountry hiking trail in a remote and challenging region of the White Mountains for the United States Forest Service.

V. Project Description

a. Project Specifications

- All structures will be built based on USFS specifications at a minimum strength rating of 65 lbs./ft.
- Approaches to bridges will be wooden steps

Fogg Farm Conservation area

- Existing bridge removed and disposed of on site
- 22' length
- 36" tread width
- 42" high railings on both sides
- 3 stringers will be comprised of 3 laminated 2"x12" with staggered joints
- Pressure treated sub deck with pressure treated deck and railings
- Abutments to be built to ensure proper bridge anchor and alignments

Torsey Pond Nature Preserve Bridge I

- Existing bridge removed and disposed of on site
- 18' length
- 60" tread width
- 42" railing on both sides
- Pressure treated sub deck with pressure treated deck and railings
- Abutments to be built to ensure proper bridge anchor and alignment

Torsey Pond Nature Preserve Bridge II

- Existing bridge removed and disposed of properly
- 18' Length
- 36" tread width
- 42" railings on both side
- Pressure treated sub deck with pressure treated deck and railings
- Abutments to be built to ensure proper bridge anchor and alignment

Torsey Pond Nature Preserve Bog Bridging

- 425' of raised bog bridges to be replaced
- Pressure treated or rough sawn cedar for all parts of bog bridges
- 18 inch tread width
- Bridging will be level to reduce slipping
- 4" x 4" pressure treated sleepers will not be more than 6 feet apart
- Planks will be made of 3" x 8" inch lumber
- Existing bog bridging will be removed and disposed of on site

Torsey Pond Nature Preserve Viewing Platform

- 6' x 9' roofed viewing platform
- Roofed with cedar shakes or shingles

- Sided with rough sawn boards
- Diamond Pier (Pin Foundations) foundations will be used
- Built with pressure treated lumber

b. Contractor Scope of Work

OBP will serve as the prime contractor and will be responsible for trail design and construction, project coordination, communication with Readfield Town Officials, materials suppliers, and employees. The layout and construction of trail structures may involve specific duties including but not limited to: mechanized and hand excavation, installation and removal of temporary erosion and sediment control barriers, chainsaw and clearing work, installation of culverts, stone cribbing, coping stones, rock drilling and stone removal, bridge, boardwalk and timber construction, removal of excess excavation debris, seeding, mulching, site restoration and rehabilitation.

c. List of Individuals Committed to the Project

Jed Talbot

Jed has over two decades of trail planning, maintenance, and construction, as well as conservation based teaching. He has conducted conservation based work in the majority of the US states and has facilitated over 100 workshops for private, federal, municipal, volunteer, and non profit groups.

Jed is the Vice President of the Professional Trailbuilders Association, a member of the Maine Trails Advisory Board, a certified Logging Professional and a certified Erosion Control Specialist.

Jed will set up the project, manage logistics, mobilize/demobilize OBP equipment, act as the primary contact for the Town of Readfield, conduct final trail alignments, act as a primary excavator operator and quality control supervisor.

Tyler Keniston

Tyler started his trails career after graduating from the University of Maine, Orono. He worked for the Maine Conservation Corps as a crew member, then crew leader, eventually becoming a trail trainer for crew leaders. Tyler has worked for OBP for six years and maintains a wood shop where he builds custom furniture during the winter months.

Alice Webber

Alice graduated from SUNY Purchase with a degree in fine art and has been using the landscape as her canvas ever since. She has worked for SCA as a crew leader and skills trainer, Maine Conservation Corps as Trail Training Instructor, and the Appalachian Mountain Club as Trails Supervisor of the Southern New England Region. She has worked with OBP in various capacities since 2010.

Wil Libby

Wil comes to OBP after 7 years as the Camp Director for the Auburn-Lewiston YMCA where he designed and built their outdoor education center trail system and features. He is the founder and Scoutmaster of a boy scout troop for disabled boys in Lewiston and guides backcountry trips for

veterans for various organizations. His experience includes operating and maintaining well drilling rigs for his family's business and specialized tracked equipment in the Army.

Dan Newton

Dan has been working on trails for over 30 years and previously worked as an educator and backcountry guide for hiking, skiing and fly fishing in the White Mountains. Dan is the President of the Waterville Valley Athletic and Improvement Association (WVAIA), which is a valued USFS partner organization responsible for talking care of trails in the Waterville Valley Region of NH. Dan has worked for OBP seasonally for seven years.

d. List of Equipment Available to the Project

- ASV RC-60 rubber tracked skid steer with attachments
- Volvo EC35C rubber tracked mini-excavator
- Kubota KX0018-4 rubber tracked excavator
- CanyCom S25 rubber tracked rotating crawler carrier
- Hitachi CG-30 rubber tracked crawler carrier
- Cormidi 100 self loading hauler/dumper
- CanyCom 602 walk behind rubber tracked dumper
- Wacker Neuson 1550 vibratory plate compactor
- Wacker Neuson RD12 vibratory drum roller compactor
- Enclosed job site trailer with all hand tools, generators, rock drills, etc. necessary for the job

VI. Fee Proposal

PROPOSAL FORM

Readfield Trail Infrastructure Project:

Project Base Price

Lump sum price to complete the project as specified. **\$39,850.00**

Cost Breakdown:

Material Estimate: \$9,250.00

Labor Estimate: \$ 25,500.00

Equipment Estimate: \$5,100.00

Project Alternates:

Alternate #1: Lump sum cost to haul all existing structures from their current location to the Town Transfer Station: \$850.00

Alternate #2: Replace pressure treated lumber with eastern white cedar: \$1.25 per lineal foot plus actual cost of sourcing vendors and transporting material at \$50/hr.

Name of Proposer (Company):

OBP Trailworks, LLC
110 Poplar Hill Road
Turner, ME 04282
207.312.1340
jed@obptrailworks.com

Name of Proposer (Authorized Representative):



Jedediah Talbot, Owner

VII. Supporting Documents

a. References

Additional references and letters of support available upon request

- James McCain, Arboretum Director, Fort Williams Park Foundation, email: James.McCain@fortwilliams.org, phone: 207.332.7488
- Brent West, Stewardship Program Manager, Georges River Land Trust, email: brent@grlt.org, phone: 207.491.2750
- Robin Kerr, Conservation Coordinator, Mt. Agamenticus Conservation Region, email: rkerr@yorkmaine.org, phone: 207.361.1110
- Dick Fortin, Tin Mountain Conservation Center and Eaton Conservation Commission; email: troutproject@tinmountain.org; phone: 603.447.6991
- Cristin Bailey, Trails Program Manager, Saco Ranger District, White Mountain National Forest; email: cristinbailey@fs.fed.us; phone: 603.447.5448 x112
- Jack Waldron, President of Wonalancet Out Door Club; email: jack@g4com.com; phone: 603.323.8913

b. Examples of OBP Built Bridges and Trail Projects



Steel I Beam and Hemlock Bridge



White Oak, Cedar, and Pressure Treated Boardwalk



White Oak and Cedar Observation Area



Cedar and Hemlock Boardwalk



Steel I Beam and PT Bridge



Native Hemlock Bridge



Steel I Beam and Cedar Bridge



Moody Park, Charlestown, NH



Langlais Sculpture Preserve, Cushing, ME



School to School Trail, Guilford, ME



Outdoor Ed Center, Auburn, ME



Cider Hill Trail, OOB, ME



Big A Trail, York, ME



Eleanor's Trail, Scarborough, ME



“BIG A” ACCESSIBLE TRAIL SYSTEM

TRAIL DESIGN AND CONSTRUCTION
MT. AGAMENTICUS, YORK, ME

From 2014 to 2016, OBP Trailworks, LLC served as the prime contractor on a mile long, design/build accessible trail system on the iconic Mt. Agamenticus in York, ME. Exceptional panoramic views from the trail extend from the White Mountains to the ocean, beaches, and forested landscapes of Maine, New Hampshire, and Massachusetts.



The design challenges on this project were matched by the highly technical nature of the construction. Much of the trail system was built directly on top of the granite dome which required building numerous stone retaining walls and over 200 feet of elevated boardwalk in three locations. The project included a circular observation platform on the summit, intermittent picnic areas and vista spur trails with overlooks.





BLUEBERRY LEDGE TRAIL

STONE STAIRCASE CONSTRUCTION

SANDWICH RANGE WILDERNESS, WHITE MOUNTAIN NATIONAL FOREST, NH



Over the summers of 2009-2011, OBP Trailworks, LLC constructed stone staircases on the Blueberry Ledge Trail on Mt. Whiteface in the Sandwich Range Wilderness, NH. This trail is the most popular in the area and was heavily eroded in many of the steeper sections. The work was accomplished using hand powered griphoist rigging systems and utilizing native materials.

Summary of Work Accomplished:

Rock steps installed: 288
Gargoyle rocks installed: 640
Rock drainages constructed: 26
Soil relocated: 47 cu. yds.
Trees transplanted: 139
Area rehabilitated: 7729 sq. ft.
Total material moved: 353,000 lbs.



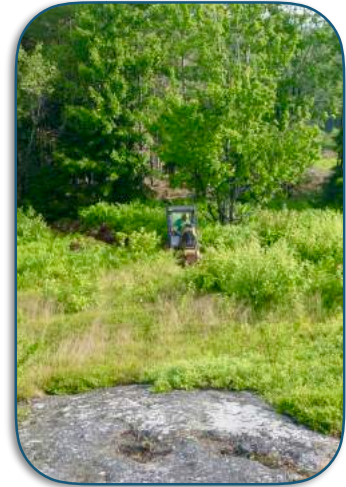
Example of the trail before and after reconstruction



FOSS MOUNTAIN TRAIL

TRAIL DESIGN AND CONSTRUCTION

EATON, NH



In 2014, OBP Trailworks, LLC designed and built a trail to the summit of the popular Foss Mountain in Eaton, NH. The alignment follows an old woods road past one of the oldest homestead sites in the area before winding through the forest and over open ledgy blueberry fields to a fantastic summit vista of the White Mountains. Three granite benches were constructed and two kiosks were installed along the trail.



The organic soil in the lower section of the trail was removed with a mini excavator. A gravel matrix was brought in with rubber tracked carriers, installed, compacted and finished by hand. Machines were also used to clean up debris from a previous logging operation in the area.





CERTIFICATE OF LIABILITY INSURANCE

DATE (MM/DD/YYYY)
02/12/2018

THIS CERTIFICATE IS ISSUED AS A MATTER OF INFORMATION ONLY AND CONFERS NO RIGHTS UPON THE CERTIFICATE HOLDER. THIS CERTIFICATE DOES NOT AFFIRMATIVELY OR NEGATIVELY AMEND, EXTEND OR ALTER THE COVERAGE AFFORDED BY THE POLICIES BELOW. THIS CERTIFICATE OF INSURANCE DOES NOT CONSTITUTE A CONTRACT BETWEEN THE ISSUING INSURER(S), AUTHORIZED REPRESENTATIVE OR PRODUCER, AND THE CERTIFICATE HOLDER.

IMPORTANT: If the certificate holder is an ADDITIONAL INSURED, the policy(ies) must have ADDITIONAL INSURED provisions or be endorsed. If SUBROGATION IS WAIVED, subject to the terms and conditions of the policy, certain policies may require an endorsement. A statement on this certificate does not confer rights to the certificate holder in lieu of such endorsement(s).

PRODUCER Riley Insurance Agency, LLC 139 Maine Street P. O. Box 659 Brunswick ME 04011	CONTACT NAME: Jane Soule PHONE (A/C, No, Ext): (207) 729-3321 E-MAIL ADDRESS: jsoule@rileyinsurance.com	FAX (A/C, No): (207) 729-4056
	INSURER(S) AFFORDING COVERAGE	
INSURED JEDEDIAH J TALBOT 110 POPLAR HILL ROAD TURNER ME 04282	INSURER A: Tri-State Insurance Co of Minnesota	NAIC # 31003
	INSURER B: Acadia Insurance Company	NAIC # 31325
	INSURER C: Maine Employers' Mutual	NAIC # 11149
	INSURER D: Green Mountain Agency, Inc	
	INSURER E: INSURER F:	


COVERAGES **CERTIFICATE NUMBER:** master18-19 **REVISION NUMBER:**

THIS IS TO CERTIFY THAT THE POLICIES OF INSURANCE LISTED BELOW HAVE BEEN ISSUED TO THE INSURED NAMED ABOVE FOR THE POLICY PERIOD INDICATED. NOTWITHSTANDING ANY REQUIREMENT, TERM OR CONDITION OF ANY CONTRACT OR OTHER DOCUMENT WITH RESPECT TO WHICH THIS CERTIFICATE MAY BE ISSUED OR MAY PERTAIN, THE INSURANCE AFFORDED BY THE POLICIES DESCRIBED HEREIN IS SUBJECT TO ALL THE TERMS, EXCLUSIONS AND CONDITIONS OF SUCH POLICIES. LIMITS SHOWN MAY HAVE BEEN REDUCED BY PAID CLAIMS.

INSR LTR	TYPE OF INSURANCE	ADDL INSD	SUBR WVD	POLICY NUMBER	POLICY EFF (MM/DD/YYYY)	POLICY EXP (MM/DD/YYYY)	LIMITS
A	<input checked="" type="checkbox"/> COMMERCIAL GENERAL LIABILITY <input type="checkbox"/> CLAIMS-MADE <input checked="" type="checkbox"/> OCCUR GEN'L AGGREGATE LIMIT APPLIES PER: <input type="checkbox"/> POLICY <input type="checkbox"/> PRO-JECT <input type="checkbox"/> LOC OTHER:			ADV5191193-13	02/15/2018	02/15/2019	EACH OCCURRENCE \$ 2,000,000 DAMAGE TO RENTED PREMISES (Ea occurrence) \$ 300,000 MED EXP (Any one person) \$ 10,000 PERSONAL & ADV INJURY \$ 2,000,000 GENERAL AGGREGATE \$ 4,000,000 PRODUCTS - COMP/OP AGG \$ 4,000,000 ADVCC \$ 5,000
B	AUTOMOBILE LIABILITY <input type="checkbox"/> ANY AUTO <input type="checkbox"/> OWNED AUTOS ONLY <input checked="" type="checkbox"/> SCHEDULED AUTOS <input checked="" type="checkbox"/> HIRED AUTOS ONLY <input checked="" type="checkbox"/> NON-OWNED AUTOS ONLY			CAA5192562-13	02/15/2018	02/15/2019	COMBINED SINGLE LIMIT (Ea accident) \$ 1,000,000 BODILY INJURY (Per person) \$ BODILY INJURY (Per accident) \$ PROPERTY DAMAGE (Per accident) \$ Medical payments \$ 5,000
	<input type="checkbox"/> UMBRELLA LIAB <input type="checkbox"/> OCCUR <input type="checkbox"/> EXCESS LIAB <input type="checkbox"/> CLAIMS-MADE DED RETENTION \$						EACH OCCURRENCE \$ AGGREGATE \$ \$
C	WORKERS COMPENSATION AND EMPLOYERS' LIABILITY ANY PROPRIETOR/PARTNER/EXECUTIVE OFFICER/MEMBER EXCLUDED? (Mandatory in NH) If yes, describe under DESCRIPTION OF OPERATIONS below		N/A	1810103336	08/06/2017	08/06/2018	PER STATUTE OTH-ER E.L. EACH ACCIDENT \$ 100,000 E.L. DISEASE - EA EMPLOYEE \$ 100,000 E.L. DISEASE - POLICY LIMIT \$ 500,000
D				CS01375026-08	01/20/2018	01/20/2019	

DESCRIPTION OF OPERATIONS / LOCATIONS / VEHICLES (ACORD 101, Additional Remarks Schedule, may be attached if more space is required)

Activities including trail construction, layout, and maintenance, masonry and stonework on trails, landscaping services, carpentry, logging, and clearing of land.

CERTIFICATE HOLDER Evidence of insurance	CANCELLATION SHOULD ANY OF THE ABOVE DESCRIBED POLICIES BE CANCELLED BEFORE THE EXPIRATION DATE THEREOF, NOTICE WILL BE DELIVERED IN ACCORDANCE WITH THE POLICY PROVISIONS.
	AUTHORIZED REPRESENTATIVE 

© 1988-2015 ACORD CORPORATION. All rights reserved.

ACORD 25 (2016/03)

The ACORD name and logo are registered marks of ACORD