








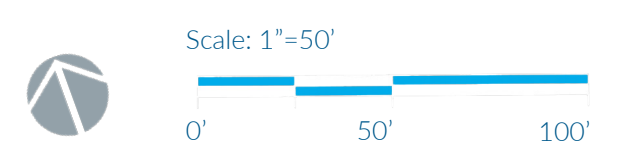


**KEY TO PLAN ELEMENTS:**

1. Gateposts with chain or similar to restrict after hours vehicle access as needed
2. Parking lot with parking reoriented to maximize spaces and optimize expansion / access while minimizing spatial impacts; (optional: paved with striping shown to maximize parking efficiency, safety, and use curbed islands with trees shown as well)
3. Crushed stone pad with portable, seasonal toilets (single and ADA) with accessible path
4. Accessible parking and trail access (both sides)
5. Main trailhead; Shift kiosk to this location and widen path for service and maintenance access to ballfields and trail network.
6. Existing trail connection with trail sign
7. Pedestrian bridge crossing feature (as needed)
8. Path extension for accessible seating with lawn areas / hills for spectator seating; Drinking fountain / water bottle filling station to be located off trail
9. Widened path to cemetery trail tie-in for maintenance and emergency access; vehicle gate with pedestrian opening.
10. Sloped access path to fields for maintenance; Added electrical and water provisions (not shown on plan).
11. Field improvements: Drainage improvements (existing field), new softball and multiuse fields
12. Preserved/restored pollinator-friendly meadow with native trees and shrubs to buffer ballfields and provide habitat for wildlife; New accessible connector path.
13. Pollinator garden loop (dashed yellow line) with educational garden spaces; Memorial features and seating (benches and logs incorporated along trail)
14. Expanded parking, (10) spaces with ADA access to trails and pollinator garden loop
15. Trail head kiosk and entrance to native pollinator garden loop and larger trail network; Shrubs to buffer abutter views

**SYMBOLS KEY:**

-  Sign location
-  Shade tree
-  Evergreen
-  Shrubs
-  Herbaceous plants
-  Lawn area
-  Pollinator meadow
-  Bench



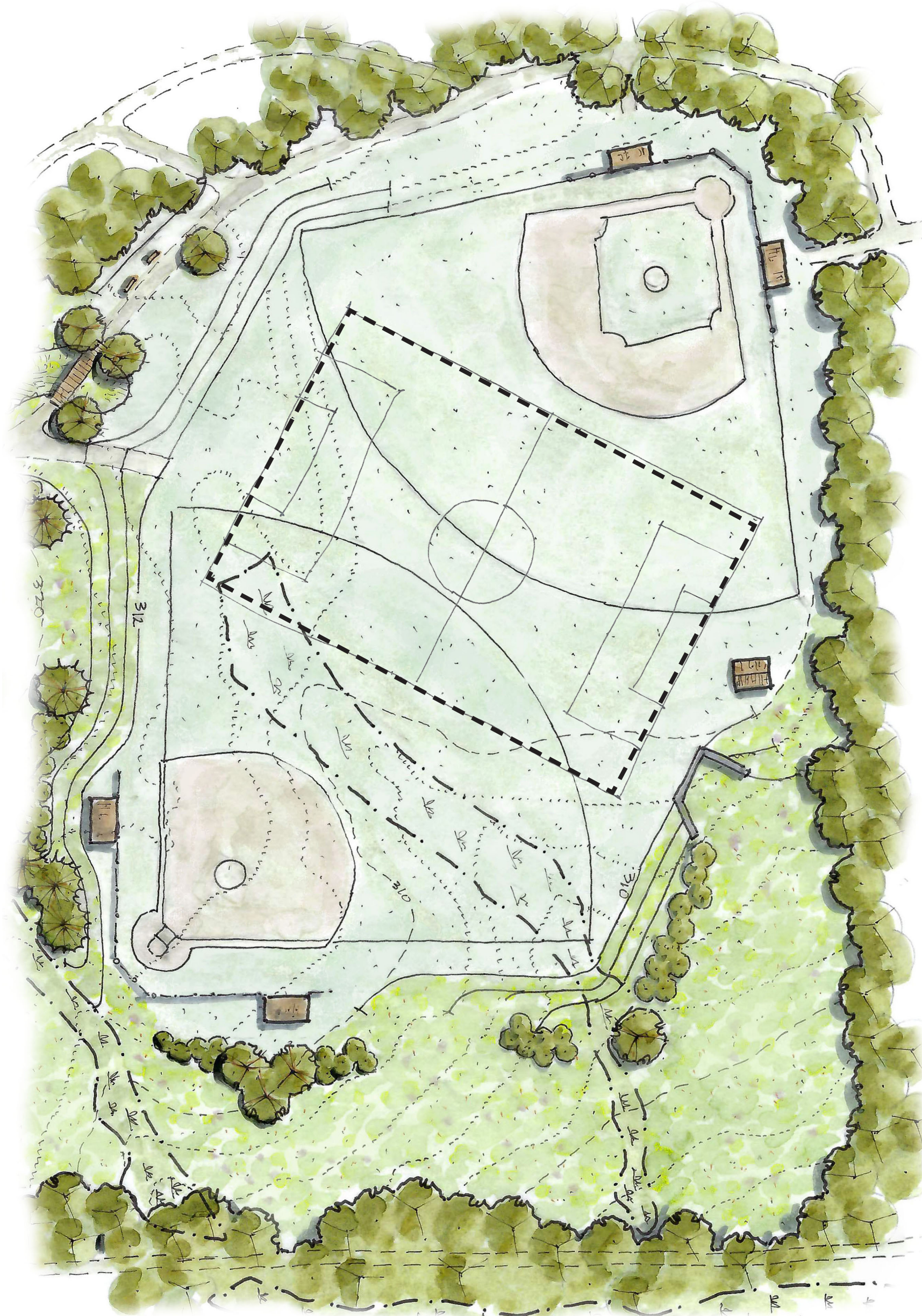
Project Team:  
 **RS LEONARD**  
 Landscape Architecture  
 Main-Land  
 Development  
 Consultants

Prepared for:  
 Town of Readfield  
 8 Old Kents Hill Rd  
 Readfield, ME 04355  
 Date: 5/02/2022  
 Rev. 5/08/2023

# Community Park & Conservation Project

## CONCEPT PLAN

READFIELD FAIRGROUNDS



**Multi Use Athletic Fields Layout A**  
Softball & Baseball with U12 Field



**Multi Use Athletic Fields Layout B**  
Softball & Baseball with (1) U10 & (3) U6-8 Fields

# Community Park & Conservation Project

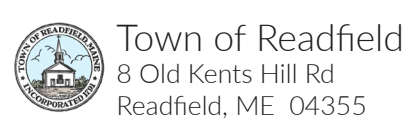
## CONCEPT PLAN

READFIELD FAIRGROUNDS

Project Team:



Prepared for:



Town of Readfield  
8 Old Kents Hill Rd  
Readfield, ME 04355

Date: 4/18/2022  
Revised 4/18/2023

