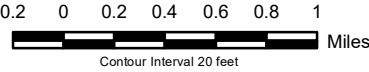


Readfield, Maine  
**OUTDOOR RECREATION & CONSERVATION AREAS**

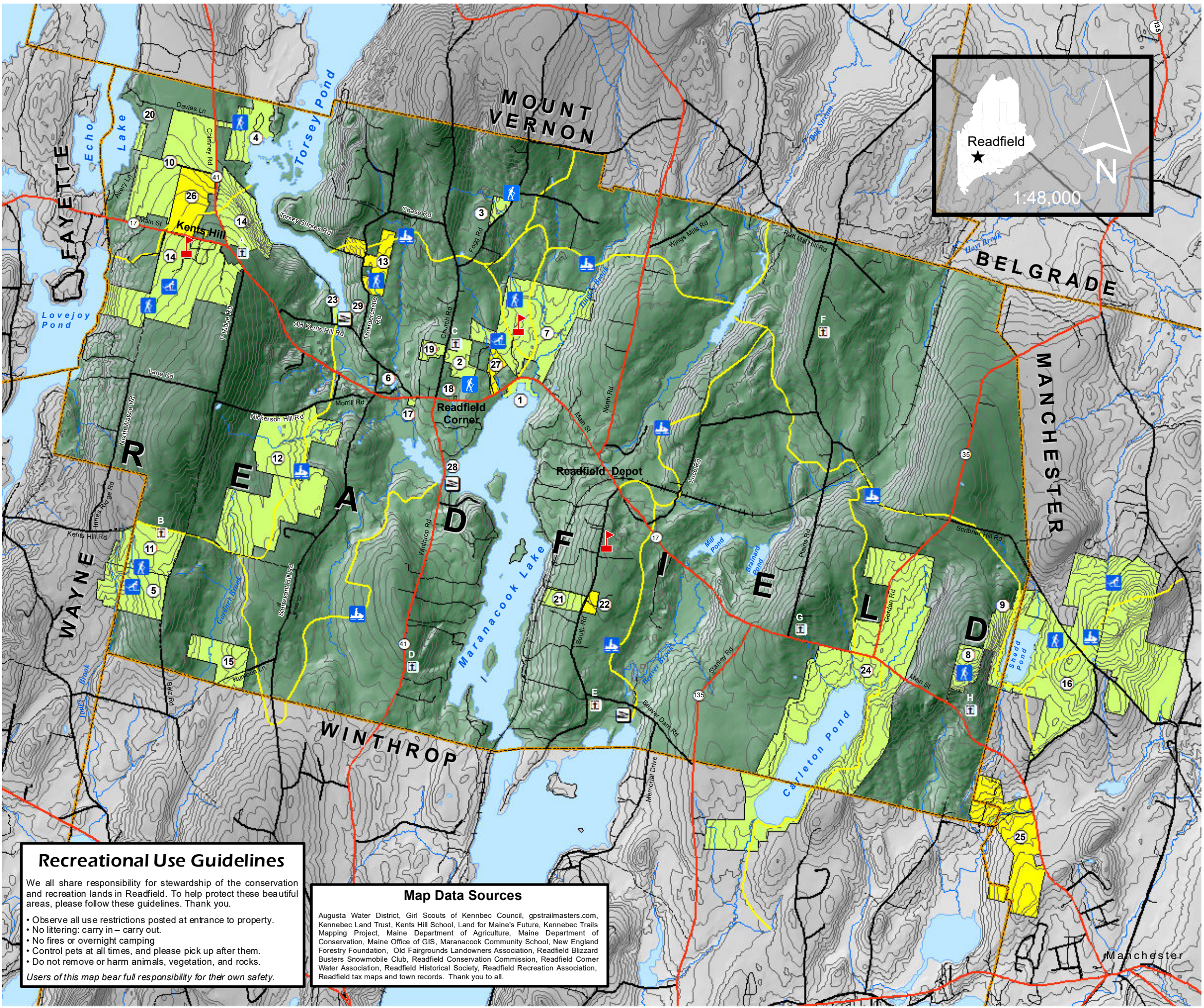
- Schools
- Cemeteries
- Skiing Areas
- Hiking Areas
- Water Access
- Snowmobile Trails
- Easements
- Conservation & Recreation Areas

GAUD = Greater Augusta Utility District  
GSKC = Girl Scouts of Kennebec Council  
KLT = Kennebec Land Trust  
KVYMCA = Kennebec Valley YMCA  
MDACF = Maine Dept of Agriculture, Conservation & Forestry  
MFT = Maine Farmland Trust  
NEFF = New England Forestry Foundation  
RSU 38 = Maranacook Area Schools RSU 38  
TOR = Town of Readfield

Parcel boundaries approximate.



Seventh Edition, April 2020.  
Research and text for all editions by Jym St. Pierre.  
First edition cartography by Bart DeVolf, second edition cartography by Jeff Fredenburg.  
Third, fourth, fifth, sixth and seventh edition cartography by Art Grindle, Kennebec Soil and Water Conservation District. Funding for map production provided by Readfield Conservation Commission and Kennebec Land Trust. 2020 Readfield Conservation Commission, 8 Old Kents Hill Road, Readfield, ME



**Recreational Use Guidelines**

We all share responsibility for stewardship of the conservation and recreation lands in Readfield. To help protect these beautiful areas, please follow these guidelines. Thank you.

- Observe all use restrictions posted at entrance to property.
- No littering: carry in – carry out.
- No fires or overnight camping
- Control pets at all times, and please pick up after them.
- Do not remove or harm animals, vegetation, and rocks.

Users of this map bear full responsibility for their own safety.

**Map Data Sources**

Augusta Water District, Girl Scouts of Kennebec Council, gpstrailmasters.com, Kennebec Land Trust, Kents Hill School, Land for Maine's Future, Kennebec Trails Mapping Project, Maine Department of Agriculture, Maine Department of Conservation, Maine Office of GIS, Maranacook Community School, New England Forestry Foundation, Old Fairgrounds Landowners Association, Readfield Blizzard Busters Snowmobile Club, Readfield Conservation Commission, Readfield Corner Water Association, Readfield Historical Society, Readfield Recreation Association, Readfield tax maps and town records. Thank you to all.

**Recreation Areas**

1. Readfield Beach (TOR)
2. Readfield Fairgrounds (TOR)
3. Fogg Farm Conservation Area (TOR, KLT)
4. Torsey Pond Nature Preserve (TOR, KLT)
5. Readfield Town Farm & Forest (TOR)
6. Mill Stream Dam (TOR)
7. Maranacook Community School (RSU 38)
8. Wyman Memorial Forest (KLT)
9. Gannett Woods (KLT)
10. Echo Lake Watershed Preserve (KLT)
11. Macdonald Conservation Area (KLT)
12. Rosmarin and Saunders Family Forest (KLT)
13. Tyler Conservation Area (KLT)
14. Kents Hill School
15. Luce Memorial Forest (NEFF)
16. Allen-Whitney Memorial Forest (NEFF)

**Other Conservation Areas**

- (with limited recreational access)
17. Readfield Recreation Lot (TOR)
  18. Parks Lot (TOR)
  19. Readfield Corner Water Association
  20. Avery-Smith Shore Land (KLT)
  21. Westman Woods (KLT)
  22. St. Andre Fields (KLT)
  23. Torsey Pond Outlet Conservation Area (KLT)
  24. Carleton Pond (GAUD)
  25. Lakeside Orchards (MDACF)
  26. Kents Hill Orchard
  27. Old Fairgrounds Field

**Water Access**

28. Maranacook Lake Boat Launch (MDACF)
29. Torsey Pond Boat Launch (MDACF)

**Cemeteries**

- A. Kents Hill Cemetery (TOR)
- B. Huntton Cemetery (TOR)
- C. Readfield Corner Cemetery (TOR)
- D. Armstrong Cemetery (PRIVATE)
- E. Whittier Cemetery (TOR)
- F. Dudley Plains Cemetery (TOR)
- G. East Readfield Cemetery (TOR)
- H. Case Cemetery (TOR)